



AM5QF...

SCREWS AND STUDS

CAP. IV • 36

## AM5QF... MODULAR FLOW REGULATOR CETOP 5

AM5.QF type one way non-compensated throttle valve are fitted with an O-Ring mounting plate which allows its assembly for either input or output regulation. Adjustment is obtained by means of a grub screw or a plastic knob. They are available in the four regulating configurations shown in the hydraulic diagrams.

These valves are supplied with related hydraulic scheme. In case of inversion of rated flow direction, turn valve 180° right or left (attention: in this case the label will appear upside down with A and B inverted).

Max. operating pressure	350 bar
Flow rate regulation	on 9 screw turns
Max. flow	100 l/min
Hydraulic fluids	Mineral oils DIN 51524
Fluid viscosity	10 ÷ 500 mm <sup>2</sup> /s
Fluid temperature	-25°C ÷ 75°C
Ambient temperature	-25°C ÷ 60°C
Max. contamination level	class 10 in accordance with NAS 1638 with filter $\beta_{25} \geq 75$
Weight	3,5 Kg

### ORDERING CODE

AM

Modular valve

5

CETOP 5/NG10

QF

Non compensated throttle valve

\*\*

Control on lines  
A / B / P / AB

\*

Type of adjustment  
M = Plastic knob  
C = Grub screw

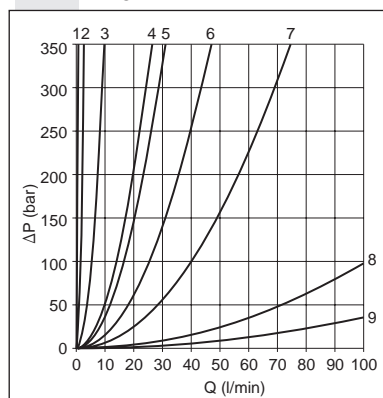
\*\*

00 = No variant  
V1 = Viton

5

Serial No.

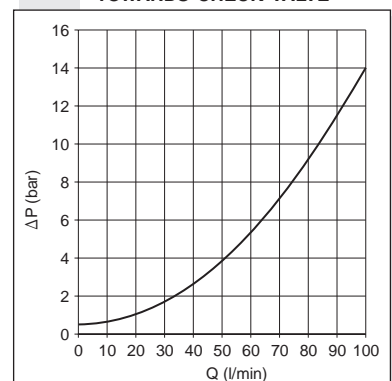
### FLOW RATE



Each curve represents the flow rate adjustment for each screw turns, starting from the closed position.

### FREE FLOW

#### TOWARDS CHECK VALVE



### HYDRAULIC SYMBOLS



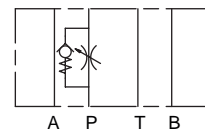
AM5QFA



AM5QFB



AM5QFAB



AM5QFP