



USE:

Designed to provide both visual and electrical control of liquids in tanks. These levels are suitable for:

- hydraulic power units;
- tanks containing water, diesel, oils with a viscosity not exceeding 150 cSt, and all other liquids compatible with the materials used.

OPERATION:

The principle used is that of communicating vessels: the liquid passes through the device via hollow screws, revealing the exact liquid level point within the tank to the user.

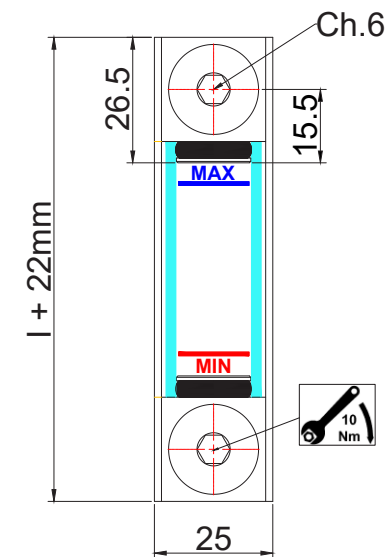
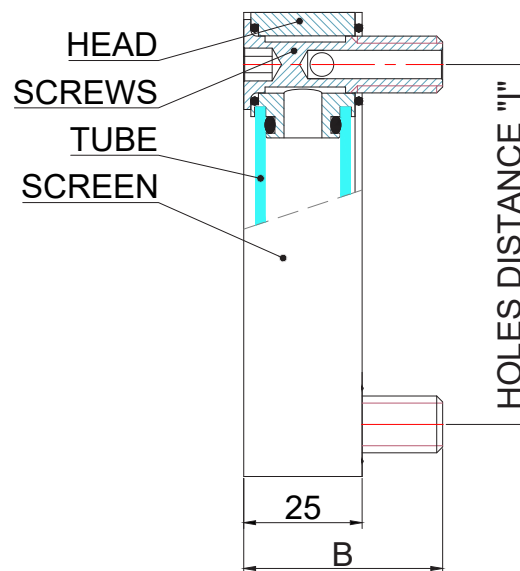
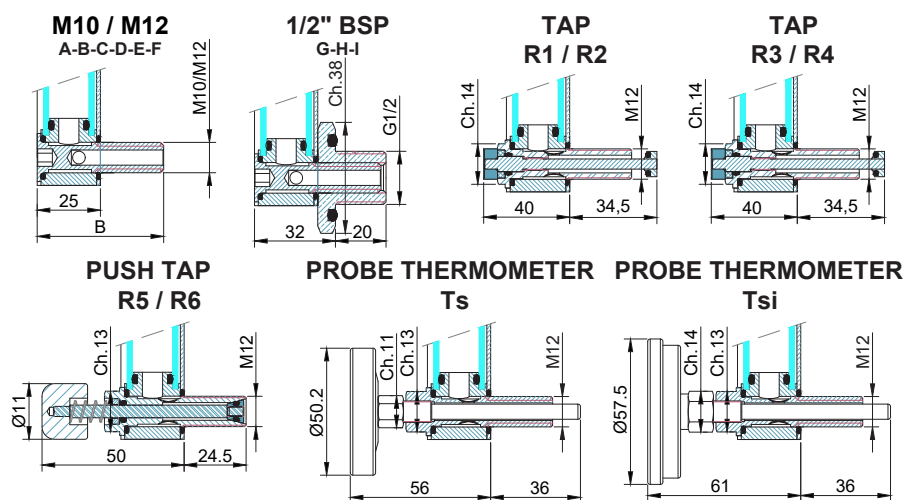
VERSATILITY:

The wide range of available components allows for customization of the device based on specific usage conditions, adapting it to different needs and ensuring optimal performance.

TUBE MATERIAL		
METHACRYLATE	UP TO I = 254 35bar	UP TO I = 1000 3bar
POLYCARBONATE	UP TO I = 254 35bar	UP TO I = 1000 3bar
PIREX	UP TO I = 1000 35bar	

Max Tightening Torque: 10 Nm

CONNECTION DIMENSIONS



ORDER FORM

MODEL	HOLES DISTANCE "I"	SCREWS MATERIAL				B (mm)	TUBE MATERIAL		TEMP (°C)	HEAD MATERIAL		TEMP (°C)	OR MATERIAL		TEMP (°C)	DEVICE				
LV/M	76	A	M10	GALVANIZED STEEL	37	1	METHACRYLATE	-40...+85	A	NYLON-GLASS (BLACK)	-30...+130	1	NBR	-30...+100	0	NO				
					42															
	127	B	M12	GALVANIZED STEEL	37							2	FKM (VITON)	-25...+200	R1	1 TAP NICKEL-PLATED BRASS				
					42															
		C	M10	NICKEL PLATED BRASS	37							R2	2 NICKEL-PLATED BRASS TAPS							
					42															
	254	D	M12	NICKEL PLATED BRASS	37	2	POLYCARBONATE	-40...+85	B	P.P.-GLASS (GREY)	0...+100	3	SI (SILICONE)	-60...+200	R3	1 AISI316 TAP				
					42															
		E	M12	AISI316	42							R4	2 AISI316 TAPS							
					50															
	381	F	M10	AISI316	42							C	ANODIZED ALUMINUM		4	HNBR	-40...+130	R5	1 AISI316 PUSH TAP	
					50															
	508	G	1/2"BSP AISI316	+ GALVANIZED STEEL SCREWS	42	3	PYREX	-70...+250	D	AISI316		5	EPDM	-45...+155	R6	2 AISI316 PUSH TAP				
					42															
		H	1/2"BSP AISI316	+ NICKEL PLATED BRASS SCREWS	42							6	MFQ (FLUROSILICONE)	-65...+175	Ts	BRASS PROBE THERMOMETER + NICKEL PLATED				
					42															
 *	I	1/2"BSP AISI316	+ AISI316 SCREWS	42									Tsi	AISI316 PROBE THERMOMETER + AISI316 SCREW					
LV/M	76	B			42	1		A		1		0								

*CUSTOMIZED HOLES DISTANCE FROM 77 TO 1000mm FOR QUANTITIES AGREED AT THE ORDERING STAGE