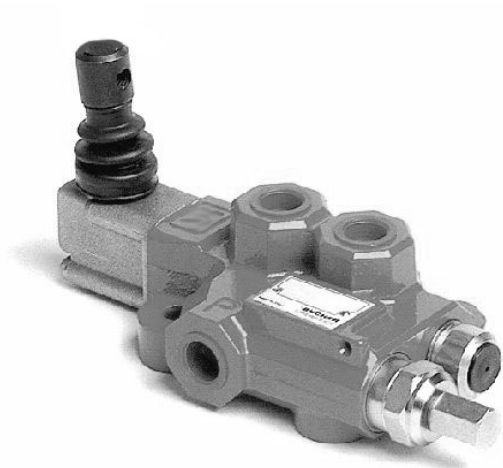


# Open Center Spool Valves

## Monoblock Directional Control Valves D-DM140



- compact hand lever control valve
- wide range of capabilities
- perfect designed for easy control

## 1 Description

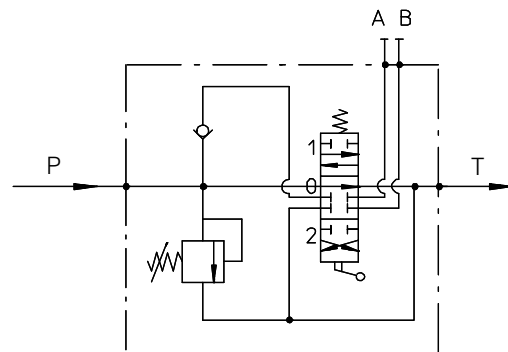
### 1.1 Short description

The D-DM140 is a single spool monoblock valve for multiple use. The valve can be used for various applications in agriculture and construction business in the power range of 220 bar and 40 l/min.

### 1.2 Application

- Wood splitter
- Light working equipment for agriculture and construction business

## 2 Symbol



## 3 General specifications

### 3.1 Technical Data

General characteristics	Unit	Description, value
Design		Monoblock design
Seal material		Nitrile Butadien Rubber (NBR)
Weight	kg	1,5
Control type		Hand lever
Number of spools		1
Adjustable direct operated relief valve		integrated
Single load hold check valve		integrated
Connection port P, T, A and B		3/8"

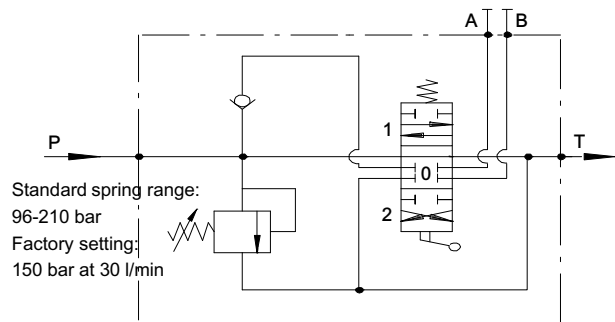


## 5 Preferred versions

### 5.1 Spool Types

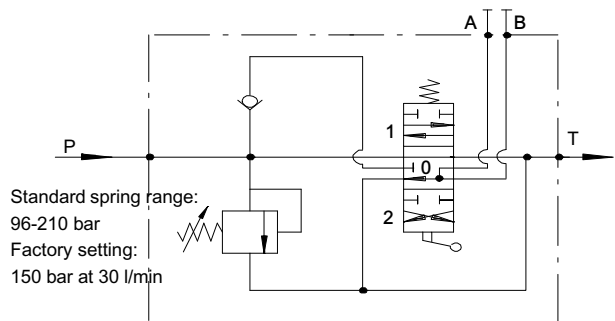
#### 5.1.1 D-DM140 with spool type A, spool positioner 01 and hand lever 100 mm length

- D-DM140K0215A01L100  
Item number unpainted: 600114079
- D-DM140K0215A01L100/TC  
Item number painted: 600114080



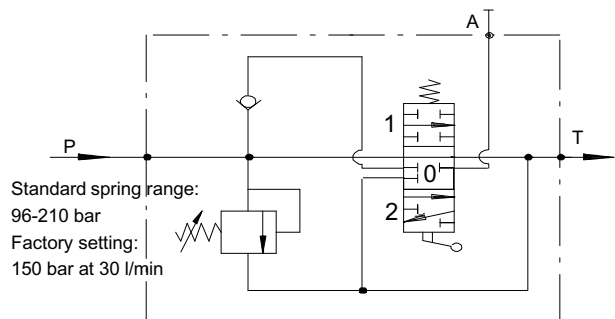
#### 5.1.2 D-DM140 with spool type C, spool positioner 01 and hand lever 100 mm length

- D-DM140K0215C01L100  
Item number unpainted: 600114087
- D-DM140K0215C01L100/TC  
Item number painted: 600114089



#### 5.1.3 D-DM140 with spool type S, spool positioner 01 and hand lever 100 mm length

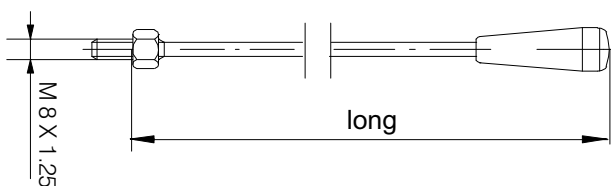
- D-DM140K0215S01L100  
Item number unpainted: 600114085
- D-DM140K0215S01L100/TC  
Item number painted: 600114086



### 5.2 Hand Lever

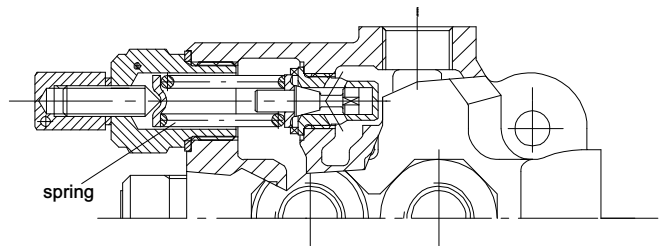
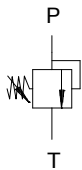
#### 5.2.1 Available hand lever to order separately

- D-AL150M8: Item number 600909200018 ( 150 mm length)
- D-AL200M8: Item number 600909200023 ( 200 mm length)
- D-AL250M8: Item number 600909200024 ( 250 mm length)



### 6 Options to be purchased separately

#### 6.1 Springs for pressure relief valve (RV)



Pressure set range [bar]	Factory setting [bar]	Order code	Item number	Spring colour
30 - 95	60	06	600114300026	Yellow
96 - 210 (Standard)	150	15	600114300038	Green
211 - 300	260	26	600114300025	Blue

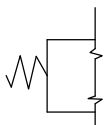
Preferred version with order code 15 = 96 - 210 bar is standard setting 150 bar

#### 6.2 Spool positioners

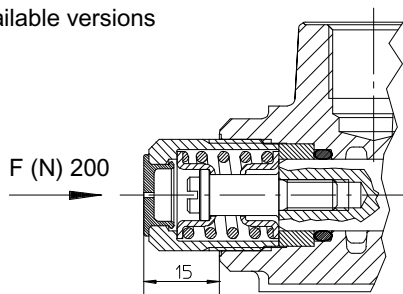
##### 6.2.1 Type 01 (D-POS.01 DM140-DM11)

Item number: 600114100043

Installed in the available versions  
(see chapter 5)

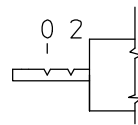


3 position spring  
return to neutral

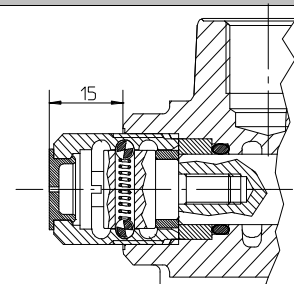


##### 6.2.4 Type 05 (D-POS.05 DM140-DM11)

Item number: 600114100180

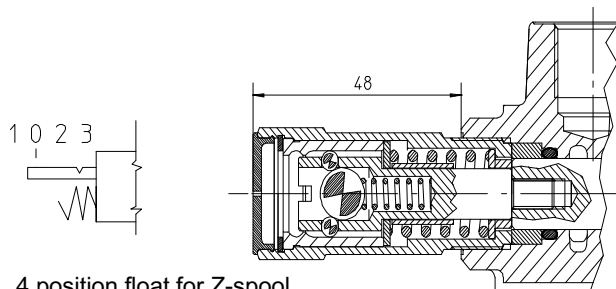


2 position detent



##### 6.2.2 Type 04 (D-POS.04 DM140-DM11)

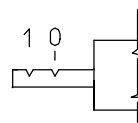
Item number: 600111100159



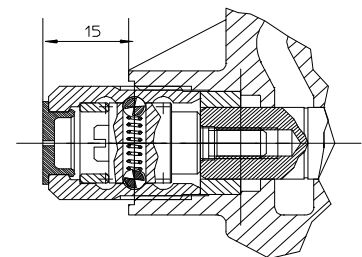
4 position float for Z-spool

##### 6.2.5 Type 07 (D-POS.07 DM140-DM11)

Item number: 600114100317

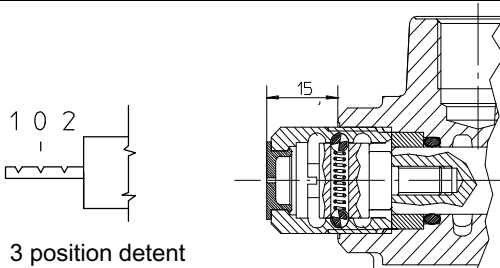


2 position detent



##### 6.2.3 Type 03 (D-POS.031 DM140-DM11)

Item number: 600114100044



3 position detent

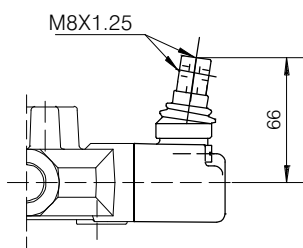
### 6.3 Spool types

Spool scheme	Spool features	Spool type	Item number
	4 way - 3 position A/B closed E open by pass	<b>A</b> (D-DM140 A Spool)	600114300010
	4 way - 3 position A/B-E closed	<b>B</b> (D-DM140 B Spool)	600114300011
	4 way - 3 position A/B to tank in neutral E open by pass	<b>C</b> (D-DM140 C Spool)	600114300012
	3 way - 3 position B closed E open by pass	<b>G</b> (D-DM140 G Spool)	600114300013
	3 way - 3 position A closed E open by pass	<b>S</b> (D-DM140 S Spool)	600114300014
	4 way - 4 position 4 <sup>th</sup> floating position spool can be used with standard body	<b>Z</b> (D-DM140 Z Spool)	600114300015

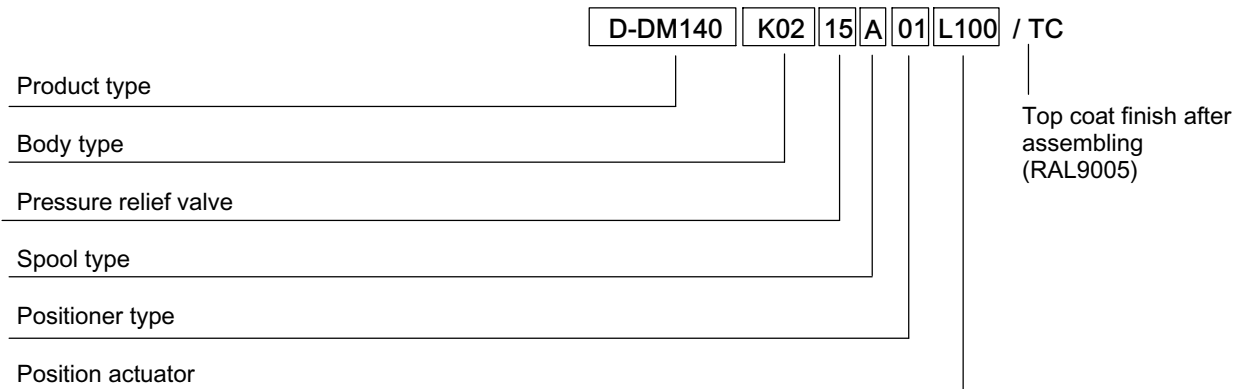
### 6.4 Hand lever fitting

#### 6.4.1 Type L100 (standard)

Order code: L100M8 Item number: 600114100045



## 7 Description of model code



### IMPORTANT!

The hand lever must be ordered separately.

## 8 Fluid

D-DM140 directional control valves require fluid with a minimum cleanliness level of ISO 4406 code 19/17/14.

We recommend the use of fluids that contain anti-wear additives for mixed-friction operating conditions. Fluids without appropriate additives can reduce the service life of valves. The user is responsible for maintaining, and regularly checking the fluid quality.

## 9 Fluid cleanliness class

Cleanliness class (RK) onto ISO 4406

Code ISO 4406	Number of particles / 100 ml		
	≥ 4 µm	≥ 6 µm	≥ 14 µm
23/21/18	8000000	2000000	250000
22/20/18	4000000	1000000	250000
22/20/17	4000000	1000000	130000
22/20/16	4000000	1000000	64000
21/19/16	2000000	500000	64000
20/18/15	1000000	250000	32000
19/17/14	500000	130000	16000
18/16/13	250000	64000	8000
17/15/12	130000	32000	4000
16/14/12	64000	16000	4000
16/14/11	64000	16000	2000
15/13/10	32000	8000	1000

[info.kl@bucherhydraulics.com](mailto:info.kl@bucherhydraulics.com)

[www.bucherhydraulics.com](http://www.bucherhydraulics.com)

© 2019 by Bucher Hydraulics GmbH, D-79771 Klettgau

All rights reserved.

Data is provided for the purpose of product description only, and must not be construed as warranted characteristics in the legal sense. The information does not relieve users from the duty of conducting their own evaluations and tests. Because the products are subject to continual improvement, we reserve the right to amend the product specifications contained in this catalogue.

Classification: 430.310...