

## ADL106... FLOW DIVERSION VALVES

The 6 way flow diversion valves are special solenoid valves which allow the simultaneous connection of two systems.

In order to obtain valve's working at pressure of 250 bar up to 320 bar (external drainage) the G 1/8" BSP plug must be removed to Y connector.

Max. pressure (without drainage, Y plugged)	250 bar
Max. pressure (external drainage)	320 bar
Max. flow	80 l/min
Fluid viscosity	10 ÷ 500 mm <sup>2</sup> /s
Fluid temperature	-25°C ÷ 75°C
Ambient temperature	-25°C ÷ 60°C
Max. contamination level	class 10 in accordance with NAS 1638 with filter β <sub>25</sub> ≥ 75
Weight	3,6 Kg

### ADL106...

"A16" DC COILS	CAP. I • 74
STANDARD CONNECTORS	CAP. I • 20

### ORDERING CODE

<b>ADL10</b>	Flow diversion valves NG10
<b>6</b>	No. of way
<b>J</b>	Connectors 3/4" BSP
<b>I</b>	Drainage plugged
<b>*</b>	Voltage (see table 1)
<b>**</b>	Variants (see table 2)
<b>1</b>	Serial No.

### TAB.1 - A16 COIL

#### DC VOLTAGE \*\*

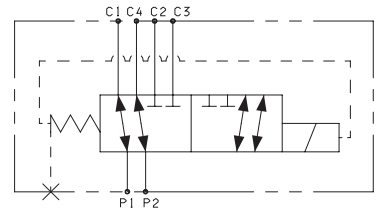
<b>L</b>	12V
<b>M</b>	24V
<b>N</b>	48V*
<b>P</b>	110V*
<b>Z</b>	102V*
<b>X</b>	205V*
<b>W</b>	Without DC coil

115Vac/50Hz 120Vac/60Hz with rectifier
230Vac/50Hz 240Vac/60Hz with rectifier

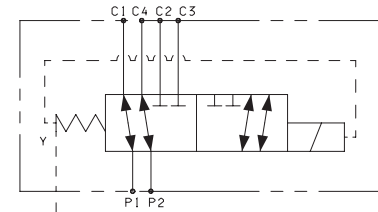
Voltage codes are not stamped on the plate, their are readable on the coils.

\* Special voltage  
\*\* Technical data see CAP. I • 74

### DRAINS AND HYDRAULIC SYMBOLS



**DRAINAGE PLUGGED**



**EXTERNAL DRAINAGE**

### TAB.2 - VARIANTS

No variant (without connectors)	S1(*)
Viton	SV(*)
Emergency button	ES(*)
Rotary emergency button	P2(*)

Other variants available on request.

(\*) Coils with Hirschmann and AMP Junior connection supplied without connectors. The connectors can be ordered separately, CAP. I • 20.

### PRESSURE DROPS

